

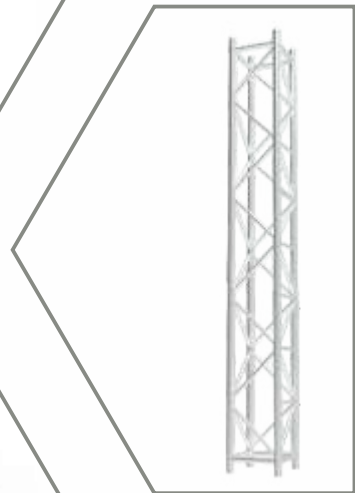
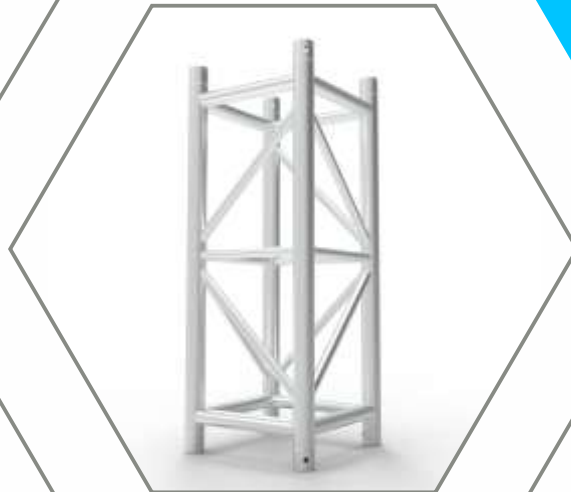
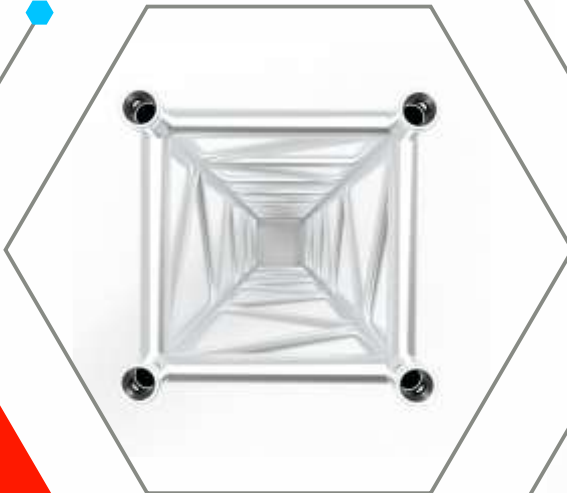
2025



PRODUCT CATALOG

MANUFACTURER & SUPPLIER OF
PREMIUM ALUMINIUM TRUSSES
& STRUCTURAL SYSTEMS

FOR EVENTS | EXHIBITIONS | INDUSTRIAL INSTALLATIONS



LIST OF CONTENT

Page

Company Introduction

03-04

Aluminium Trusses

ST-38-LD (PILLER)	05
ST-38 HD-XHD (PILLER)	06
ST-65-LD (BEAM)	07
ST-65-HD (BEAM)	08
ST-65-XHD (BEAM)	09
ST-38-LD (Top Plate)	10
ST-38-HD-XHD (Top Plate)	10
BASE OF ST-38-LD	11
BASE OF ST-38-HD-XHD	11
SLEEVE BLOCK ST-65-HD-XHD	12
SLEEVE BLOCK-ST-77-HD	12
BASE OF ST-40-HD	13
Hybrid Base Plate – ST-40	13
ST-40-LD (Top Plate)	14
ST-40-HD (Top Plate)	14
ST-40-LD (PILLER)	15
ST-40-HD-XHD (PILLER)	16
ST-77-HD (BEAM)	17
ST-77-LD (BEAM)	18
CORNER BLOCK-300, 385, 405	19
Round Truss	20
Roof Truss System	21

ASSESORIES & CONNECTION SYSTEM

50MM HINGE SETS	22
Connections	
Spigot	
Truss Locking Pin	
Clamps	23

Welcome to Aluminium Truss Factory (ATF)

Aluminium Truss Factory (ATF) is a trusted name in the design, manufacture, and supply of high-quality aluminium trusses and structural frameworks. With state-of-the-art production facilities and a highly skilled team, we deliver durable and customizable truss systems for a wide range of industries — from event staging and exhibitions to architectural and industrial applications.

Key Highlights:

- Over 10 years of industry experience
- ISO-certified production standards
- Custom design capabilities
- Nationwide delivery and installation support

Our Vision

To cover all domestic markets and take our first step into the international arena with reliable, export-grade aluminium truss solutions.

About Us

About Aluminium Truss Factory (ATF)

Founded by experienced professionals from the event industry (since 2013), ATF is dedicated to engineering truss systems that stand the test of time. We combine innovation, safety, and functionality to support events, stage productions, exhibitions, and brand activations with maximum structural reliability.

Our trusses are built using premium-grade aluminium alloys and manufactured under strict ISO-certified quality control to ensure both strength and lightweight performance.

Why ATF?

- Advanced CNC and TIG welding machines
- Experienced team of fabricators and structural designers
- Capacity for bulk orders and urgent deliveries
- Event industry roots with technical expertise since 2013

Our Products

Explore Our Aluminium Truss Systems

- **Square Truss** – Ideal for heavy-load stage and lighting setups
- **Triangular Truss** – Lightweight & easy-to-handle truss for general applications
- **Flat Truss** – Perfect for exhibitions, indoor banners, and booth systems
- **Goalpost Truss** – Versatile truss structures for stage entries, gates & branding
- **Lighting & DJ Truss** – Built to support lighting rigs, LED panels, and sound gear
- **Custom Trusses** – Tailored solutions based on event design and technical requirements

Our Services

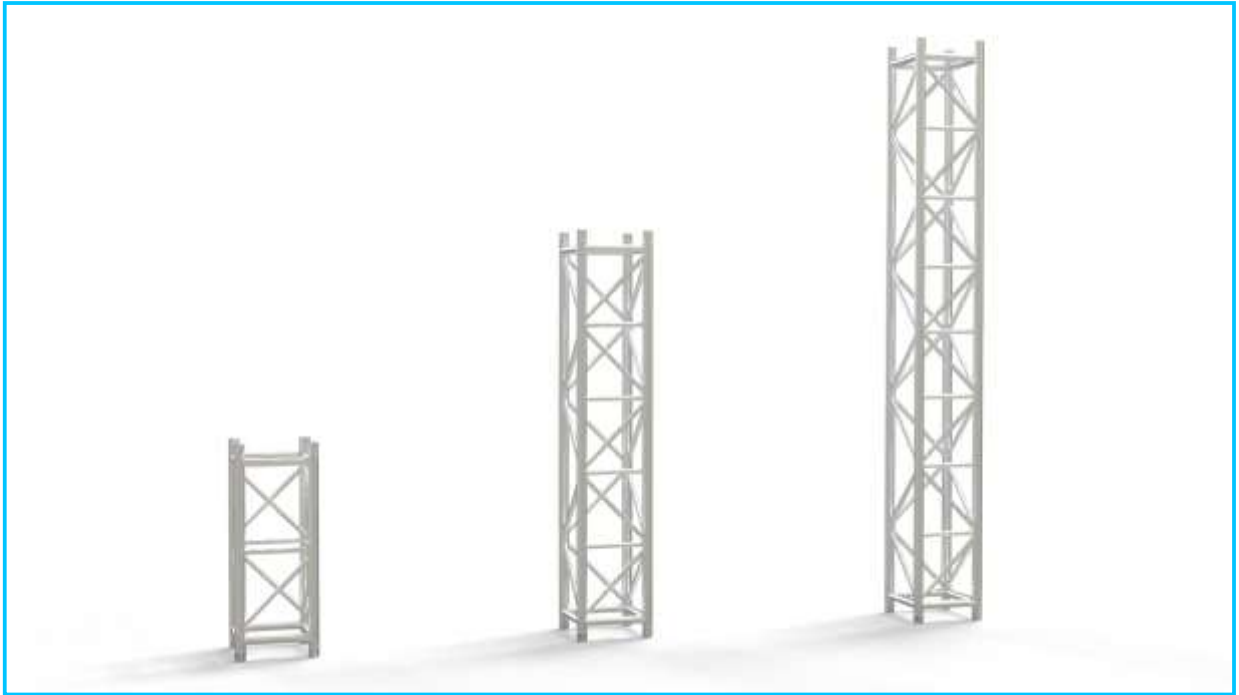
Our Services at a Glance

- **Truss Manufacturing** – Fabricated using certified aluminium, with precision finishing
- **Truss Rental** – Cost-effective rental solutions for events, concerts, and exhibitions
- **Installation Support** – On-site setup with experienced riggers and safety-first approach
- **Maintenance & Repair** – Extend truss lifespan with timely inspection and repairs

Experience Since 2013

We bring more than a decade of real-world experience from the event industry, enabling us to deliver practical, tested, and innovative truss systems that work seamlessly in the field. Whether you're planning a small indoor setup or a mega outdoor event, ATF has the infrastructure and insight to support your vision.

Aluminium Truss ST-38-LD Series



Standard Sizes: 0.5m, 1m, 2m, 3m, (Customization Also Available)

Model Codes: ST-38-LD-100, ST-38-LD-200, ST-38-LD-300

Description: The ST-38 Series is a premium-grade aluminium truss system designed for high-strength and lightweight structural applications. Engineered using EN-AW-6082-T6 aluminium alloy, these trusses are ideal for events, exhibitions, stage constructions, and display systems. Featuring a 380mm x 380mm square profile, each truss is meticulously welded with 5356-grade filament and finished with deburred edges for enhanced safety and visual appeal.

Key Specifications:

Outer Dimensions: 385mm x 385mm

Main Chord: Ø50 x 3.0mm (x4)

Vice Chord: Ø50 x 2.5mm

Sub Chord: Ø25 x 3.0mm

Brace Elements: Ø25 x 3.0mm

Material: EN-AW-6082-T6 Aluminium

Connection: Ø50 x 43.8mm spigots

Finish: Deburred and edge-broken

Tolerances: As per ISO 2768 standards

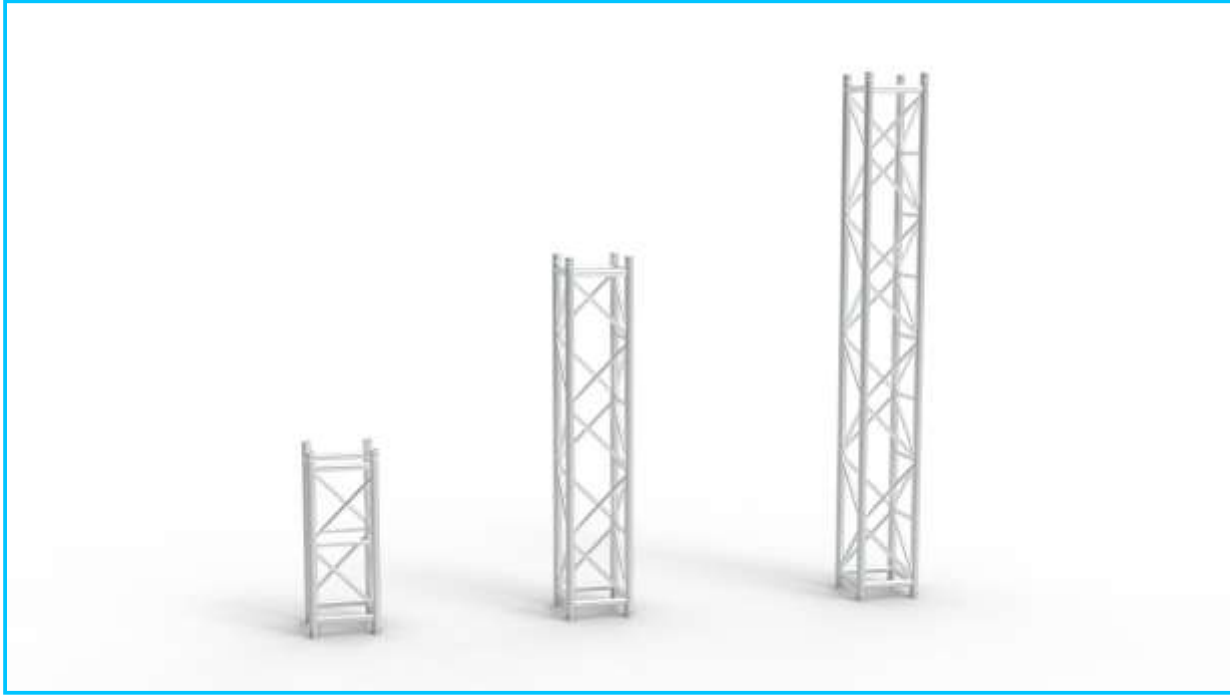
Applications:

Event stage structures
Exhibition booth frames
Lighting grid supports
Truss roofs and towers

Highlights:

Precision engineered and ISO-toleranced
Lightweight and corrosion-resistant
Quick and secure connection system
Durable under load with excellent weld integrity

Aluminium Truss ST-38-HD-XHD Series



Standard Sizes: 0.5m, 1m, 2m, 3m, (Customization Also Available)

Model Codes: ST-38-HD-XHD-100, ST-38-HD-XHD-200, ST-38-HD-XHD-300

Description: The ST-38-HD-XHD Series is a high-performance aluminium truss system tailored for heavy-duty and extra heavy-duty load-bearing applications. Crafted from EN-AW-6082-T6 aluminium, this 385mm square truss is engineered for robustness, safety, and stability—making it ideal for demanding events, stage roofs, high-load lighting rigs, and long-span structures. This series includes additional internal bracing for reinforced strength under extended or elevated load conditions.

Key Specifications:

Outer Dimensions: 385mm x 385mm

Main Chord: Ø50 x 3.0mm (x4)

Vice Chord: Ø50 x 2.5mm

Braces: Ø25 x 3.0mm

Internal Brace (extra support): Ø25 x 3.0mm

Connection: Ø50 x 43.8mm Spigot

Material: EN-AW-6082-T6 Aluminium Alloy

Finish: Deburred with chamfered edges

Tolerances: As per ISO 2768 standards

Applications:

Large concert stage roofs

Load-intensive lighting and sound truss structures

Long-span event and exhibition setups

Outdoor truss towers and rigging

Highlights:

Engineered for HD/XHD performance

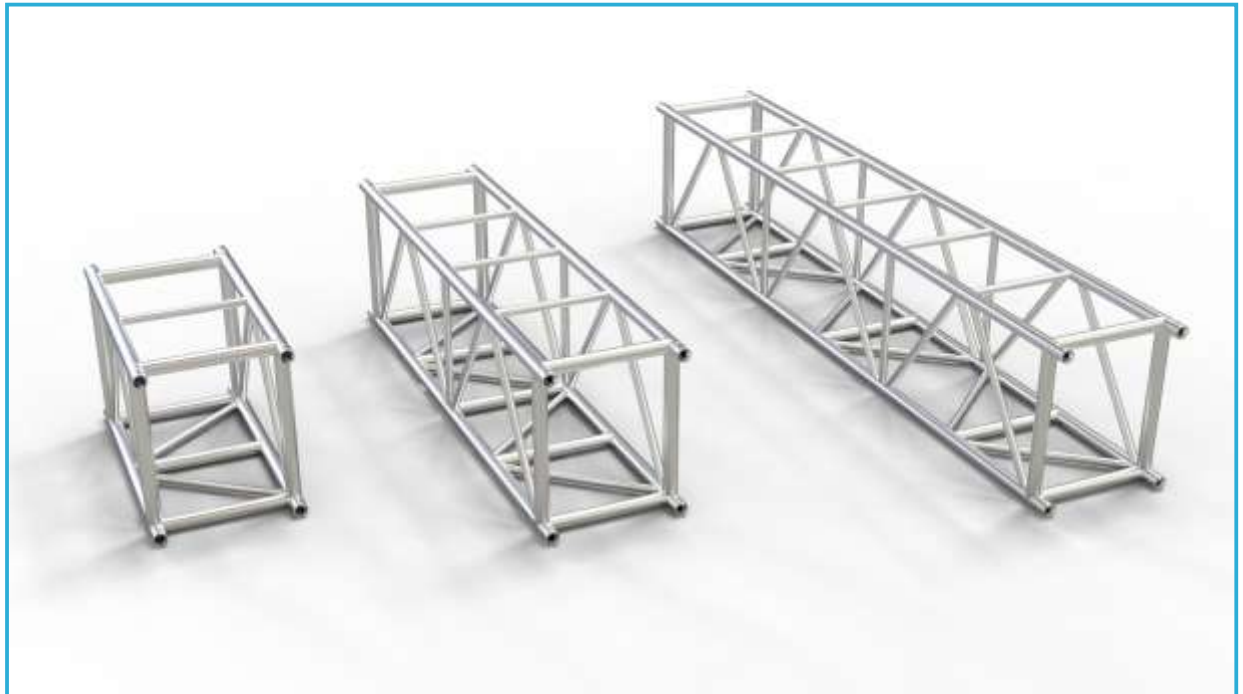
Enhanced internal bracing for superior strength

ISO-toleranced precision fabrication

Lightweight with excellent load capacity

Compliant with First Part Approval (FPA) protocols

ST-65-LD (Beam Truss System)



Available Sizes: 0.5m, 1m, 2m, 3m, (Customization Also Available)

Model Codes: ST-65-LD-100, ST-65-LD-200, ST-65-LD-300

Description: A precision-engineered truss beam designed for professional stage and structural setups. Crafted from high-grade EN-AW-6082-T6 aluminum alloy, this beam offers outstanding strength, durability, and corrosion resistance — ideal for demanding environments in events, exhibitions, and rigging applications.

Key Specifications:

Main Tube: Ø50×3.0 mm

Side & Top Vice Tubes: Ø50×2.5 mm

Bracing: Side and Top-Down Brace Ø30×3.0 mm

Connections: Secure 50mm Conical Connectors

Outer Dimensions: 605mm x 505mm

Material: EN-AW-6082-T6 (High-Strength Aluminum Alloy)

Precision Machined Angles: 49.6° to 59.5° (typical)

Weight (Approx.): 12.9 Kg per Meter

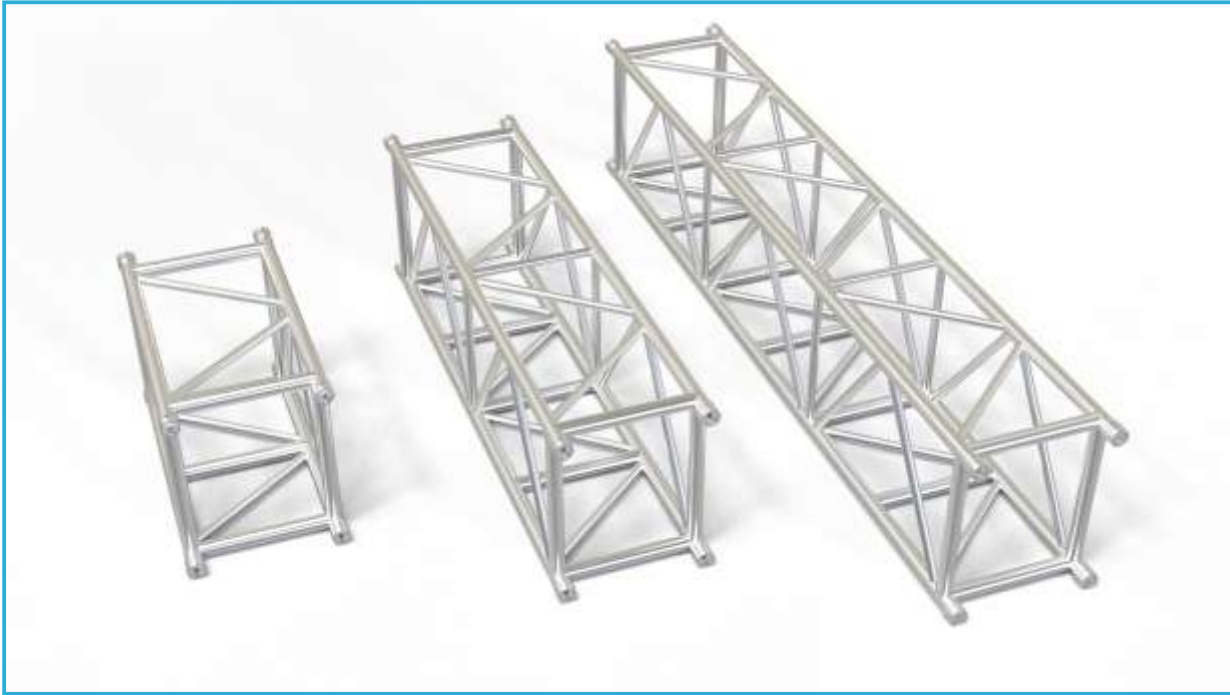
Applications:

- Stage truss systems
- Exhibition booth structures
- Lighting grid supports
- Temporary event frameworks

Advantages:

- Lightweight and easy to handle
- High load-bearing capacity
- Corrosion-resistant aluminum construction
- Modular design for flexible setup

ST-65-HD (Heavy-Duty Truss Beam)



Available Sizes: 0.5m, 1m, 2m, 3m, (Customization Also Available)

Model Codes: ST-65-HD-100, ST-65-HD-200, ST-65-HD-300

Description: The ST-65-HD is a heavy-duty truss beam engineered for robust structural performance in demanding applications. Made with reinforced $\text{Ø}50 \times 4.0$ mm main tubes and precision-machined conical connectors, it ensures maximum stability and load-bearing strength. Ideal for professional stage truss systems, industrial rigs, and high-load installations.

Key Specifications:

Beam Length: 3,000 mm (± 0.5 mm)

Main Tube: $\text{Ø}50 \times 4.0$ mm (EN-AW-6082-T6)

Bracing: Side and Top-Down Braces $\text{Ø}30 \times 3.0$ mm

Sub Tubes: $\text{Ø}30 \times 3.0$ mm,

Connections: 60 mm Conical Connections

Outer Dimensions: 615mm x 515mm

Material: EN-AW-6082-T6 aluminum alloy

Weight (Approx.): 14.6 Kg per Meter

Product Highlights:

Heavy-duty construction for high-load applications

Corrosion-resistant and lightweight alloy

Ideal for large-format stage systems and high-stress zones

ISO:2768 compliant tolerances and precision-fitted parts

Designed for modular integration and quick assembly

Applications:

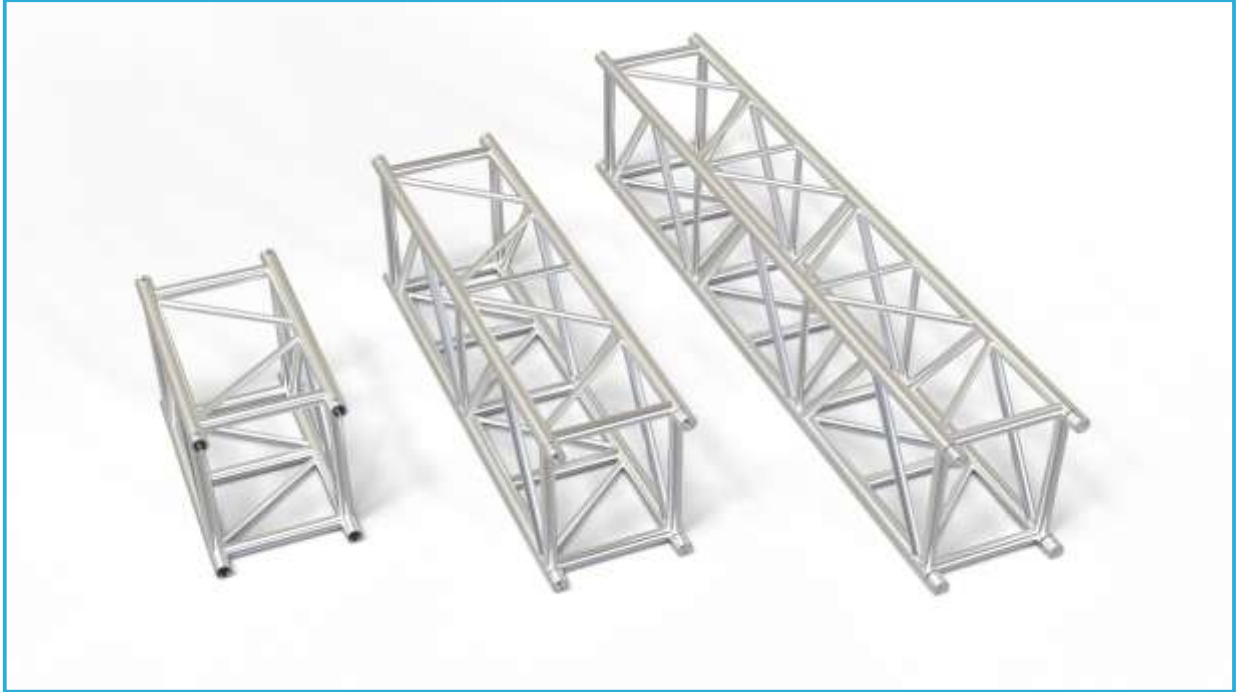
Concert and event rigging

Truss-based support for lighting/sound systems

Temporary and permanent stage structures

Industrial scaffold frameworks

ST-65-XHD (Extra Heavy-Duty Truss Beam)



Available Sizes: 0.5m, 1m, 2m, 3m, (Customization Also Available)

Model Codes: ST-65-XHD-100, ST-65-XHD-200, ST-65-XHD-300

Description: The ST-65-XHD is a high-performance extra heavy-duty truss beam, engineered for extreme structural reliability and strength. Built with $\varnothing 60 \times 4.0$ mm main tubes and reinforced $\varnothing 40$ mm bracing, this truss is designed to support substantial loads, making it ideal for large-scale stage structures, permanent rigging systems, and industrial frameworks.

Key Specifications:

Main Tube: $\varnothing 60 \times 4.0$ mm,
Side Vice: $\varnothing 50 \times 2.5$ mm
Top Vice & Down Tubes: $\varnothing 50 \times 2.5$ mm
Bracing:
Side Brace: $\varnothing 40 \times 3.0$ mm
Top-Down Brace: $\varnothing 30 \times 3.0$ mm
Side: $\varnothing 30 \times 3.0$ mm
Top: $\varnothing 30 \times 3.0$ mm
Connection System: 60 mm Conical Connectors
Outer Dimensions: 615mm x 515mm
Material: EN-AW-6082-T6 Aluminum Alloy
Weight (Approx.): 17.2 Kg per Meter

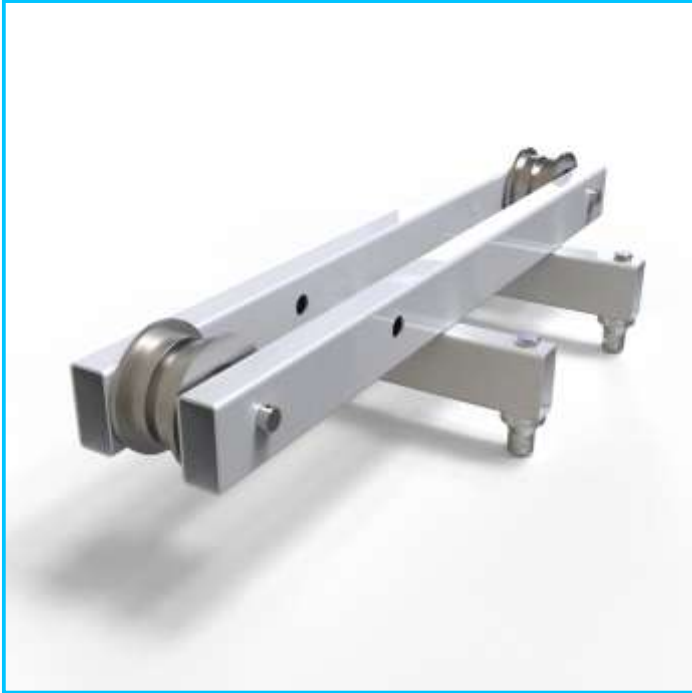
Applications:

Touring concert stages
 Permanent auditorium and event hall installations
 Large format trade exhibitions
 Industrial equipment rigs and grid systems

Highlights:

Reinforced $\varnothing 60$ mm structure for maximum load-bearing
 Increased bracing diameter ($\varnothing 40$ mm) for added rigidity
 Durable, corrosion-resistant aluminum alloy
 Ideal for critical installations, long spans, or heavy lighting/audio loads
 Designed to comply with ISO:2768 tolerances

Top Plate – ST-38-LD



Model Codes: ST-38-LD

Description: The Top Plate of ST-38-LD is a precision-engineered load-bearing assembly designed for use with the ST-38-LD truss tower system. Fabricated from high-strength mild steel and alloy components, this top plate provides stable and secure mounting for hoisting, rigging, or structural extensions. It features dual RHS sections, an integrated pulley system suitable for both motorized hoists and manual chain blocks, high-grade bearings, and half-male connectors—offering both mechanical durability and functional versatility for medium-duty lifting applications.

Key Specifications:

Material:

Top & Bottom Tubes: Mild Steel YST 310 80×40×3.0mm

Pulley & Rods: 42CrMo4 Alloy Steel (Grade 1.7225)

Top Plate Length: 930mm

Bottom Plate Length: 385mm

Bore Bush: Ø25×2.0mm

Connectors: 50mm Half Male (x4)

Pulley Load Rating: 2 Ton

Pulley Bearings: SKF 62_22_2_01 (x8)

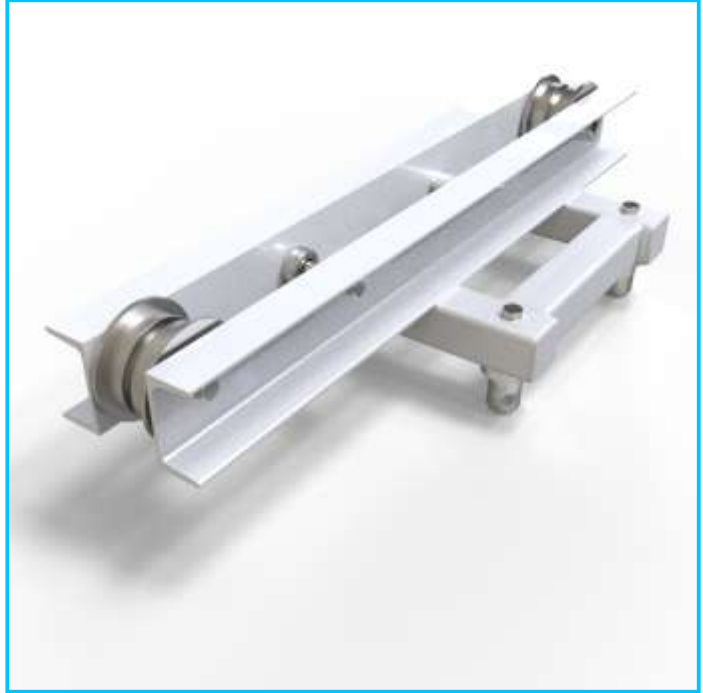
Pulley Rod Diameter: 22mm

Bolt Specification: IS 3640 - M14×105mm HT Bolts

Features:

Robust mild steel and alloy construction
Compatible with 2-ton hoist systems
Integrated dual-pulley assembly
Suitable for motorized hoists and manual chain blocks
SKF bearings for smooth operation
Standardized chamfering and bolt interface
Q/C approved and FPA compliant design

Top Plate – ST-38-HD/XHD



Model Codes: ST-38-HD-XHD

Description: The Top Plate of ST-38-HD/XHD is a heavy-duty steel structure engineered to support lifting systems in high-load tower truss setups. This assembly is designed with robust channel sections, dual square hollow tubes, and integrated pulley systems, making it ideal for demanding event environments. It comes complete with SKF bearings, high-tensile bolts, and a 4.75-ton D-shackle for secure rigging and load-bearing performance.

Key Specifications:

Top Channel: C-Channel 100×50×5mm – Mild Steel (x2, 930mm each)

Bottom Tubes:

Tube-01: SHS 60×60×4.0mm (x2, 405mm)

Tube-02: SHS 50×50×3.0mm (x2, 285mm)

Support Tube: Ø25×2.0mm (Mild Steel)

Top Pulley Rods: Ø22mm × 105mm – 42CrMo4 (x3)

Top Pulleys: 2-Ton Capacity – 42CrMo4 (x2)

Bearings: SKF 62_22_2_01 (x8)

Shackle: 4.75 Ton D-Shackle (Alloy Steel)

Connectors: 50mm Half Male – 42CrMo4 (x4)

Bolts: M14 × 80mm HT Hex Bolts (x4) – Alloy Steel

Features:

Heavy-duty structure for extra load-bearing truss towers
Triple pulley rod setup for enhanced lifting precision
D-Shackle included for safe rigging
Smooth pulley rotation using SKF bearings
Designed with production safety and FPA (First Part Approval) compliance
Q/C certified parts only

Base – ST-38 (305 / 385 Series)



Model Codes: BS-ST-38-H

Description: The Base Plate Assembly for ST-38 truss towers is a robust, fully-integrated foundation system designed for both 305mm and 385mm tower configurations. Engineered from precision-formed mild steel, it includes a modular combination of connectors, wheel systems, and outriggers for safe, adjustable, and mobile support. This assembly ensures reliable load distribution and easy mobility, even under heavy-duty operational environments.

Key Specifications:

Compatible Truss Series: ST-38 (305mm / 385mm)
Main Frame Dimensions: 2960mm (L) × 335mm (W)
Material: High-grade Mild Steel
Height Adjustability: DR-M22 height adjusters (x8)
Mobility:
 Wheel Assemblies (x4) – Bolt-on or weldable
 Outriggers for stabilization (x4) – DR-OT-38-H
 Locking Pins – DR-OT-PIN-38-H (x4)
Connector Type: 50mm Half Male (x4)
Bolts for Connectors: M14 × 120mm – IS 3640 Standard

Tube Specifications:

Main Tubes: 96×48×3.0mm (Lengths: 1150mm and 551mm)
Outer Tubes: 80×40×3.0mm (722.1mm)
Outrigger Tubes: 80×40×3.0mm (1100mm)
Stabilizer Flats: 50×10mm
Upper Flat for Pins: 40×5mm
End Cap: 3–5mm per tube dimension

Hybrid Base – SST-38 (HD/XHD)



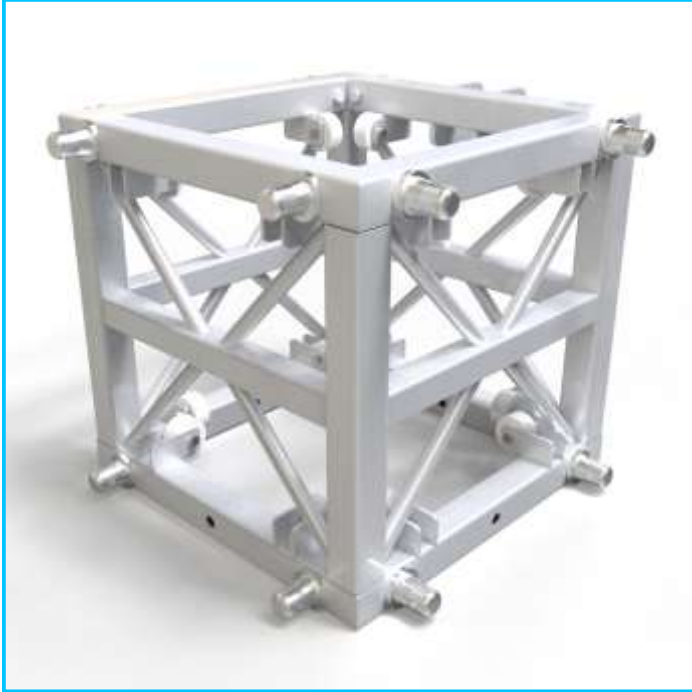
Model Codes: BS-ST-38-HD-XHD

Description: The Hybrid Base for SST-385 HD/XHD series is a heavy-duty, mobility-enabled support base designed for large-scale tower truss structures. Built using premium YST-310/355 grade steel, this base assembly ensures strength, adjustability, and ease of movement in event or industrial setups. With high-bid weld-reinforced plates and precision-fit components, it is engineered to deliver superior load support and stability in all directions.

Key Specifications:

Base Dimensions: 898mm × 335mm
Frame Material: YST-310 High-Strength Steel
Plates: 8mm Thick – YST-355 Grade
Design: Welded reinforced top & bottom frame
Height Adjustability: M-28 Height Adjusters (x4) – EN-19
Mobility:
 Heavy-duty Caster Wheels (x4)
 Wheel-attachable via bolt or weld
Connector System:
 50mm Half Male Connectors (x4) – EN-19
 Fastened with M14 × 120mm
 High-Tensile Hex Bolts (x4) – Alloy Steel
Tube Sections:
 Main Tubes (96×48×3.0mm) in multiple lengths: 734.1mm, 519.1mm, 1086.2mm
 Adjustor Tube: Ø37.7×2.0mm

SLEEVE BLOCK ST-65-SB-HD/XHD



Model Codes: ST-65-SB-HD-XHD

Description: The ST-65-SB-HD-XHD Sleeve Block is an essential structural component for the ST-65 HD and XHD truss series, designed to enable vertical lifting and secure positioning of heavy-duty truss spans. This precision-engineered assembly allows safe integration with hoist systems and M20 eye bolts, ensuring high-load handling and operational safety in event and industrial rigging setups.

Key Specifications:

System Compatibility: ST-65-HD & ST-65-XHD Truss Series

Tube Size: 60×60×4.0 mm

Assembly Weight: Approx. 81,226.2 g

Eye Bolt Mounting: M20 compatible

Tyre Size: Ø67 mm nylon wheels

Materials:

Tubes & Plates: YST-310 / YST-355

Connectors: EN-19 alloy

Tyres: Nylon

Bolts: Alloy Steel (M10 & M14)

Assembly Components:

Top, Middle, and Bottom Main Tubes
Vertical & Mid Tubes

16 Braces (Ø25×3.0 mm)

32 Tyre Plates & 16 Nylon Tyres

2 Shackle Plates for secure coupling

16 Half Male Connectors with bolts

Key Features:

Heavy-duty construction with reinforced tubing
Integrated tyre system for smooth truss movement
Chamfered edges and ISO:2768 tolerance compliant
Designed for safe load distribution and vertical rigging

SLEEVE BLOCK ST-77-SB-HD



Model Codes: ST-77-SB-HD

Description: The ST-77-SB-HD Sleeve Block is a robust structural component tailored for the ST-77 HD truss series. Designed to ensure safe vertical lifting, alignment, and smooth travel along truss towers, it integrates seamlessly with M20 eye bolt hoists. Its reinforced square tube frame and nylon tyre assembly ensure high load capacity and mobility under rigging stress.

Key Specifications:

System Compatibility: ST-77-HD Truss Series

Tube Dimensions:

Main Tubes: 60×60×4.0 mm

Mid Tube: 50×50×3.0 mm

Vertical Tubes: 60×60×4.0 mm

Eye Bolt Compatibility: M20

Weight (Approx.): 81,226.2 g

Material:

Frame: YST-310

Plates: YST-355

Connectors: EN-19

Wheels: Nylon

Bolts: Alloy Steel

Component Breakdown:

4 Top and 4 Bottom Main Tubes

4 Vertical Tubes, 4 Mid Tubes

16 Braces (Ø25×3.0 mm)

32 Tyre Plates with 16 Nylon Tyres

16 Half Male Connectors with M14 bolts

2 Shackle Plates for hoist linkages

Key Features:

Designed for high-strength vertical load handling
Fitted with nylon wheels for guided movement
Corrosion-resistant, durable construction
Precision tolerances conforming to ISO:2768
Chamfered edges for safety and clean assembly

Base Plate – ST-40-HD



Model Codes: BS-ST-40-HD

Description: The ST-40-HD Base Plate Assembly is a heavy-duty, ground-level support system tailored for the ST-40-HD truss series. Constructed from precision-formed mild steel and equipped with mobility and leveling options, this assembly provides rock-solid stability and field adaptability for large-scale rigging structures. With bolt-on or weldable wheels, eight-point height adjustability, and integrated outriggers, it ensures maximum load distribution and structural integrity.

Key Specifications:

Frame Size: 3120mm × 355mm
Compatible Truss Size: 405mm × 405mm (ST-40 Series)
Material: High-grade Mild Steel
Main Tubes:
 122×61×4.5mm
 Outer Tubes: 96×48×3.0mm
Connectors: 50mm Half Male (x4) – Bolt-on
Fasteners: M14 × 145mm HT Hex Bolts (x4)
Mobility Option:
 Heavy-duty Wheels (x4) – Bolt or weld option
 Height Adjustability: DR_M28 Height Adjustors (x8)
Outriggers:
 DR-OT-40-H – 1180mm Stabilizer Tubes (x4)
 DR-OT-PIN-40-H Locking Pins (x4)
Finish: Chamfered edges (0.5×45°), burr-free
Compliance: ISO:2768 tolerance, Q/C certified, FPA-ready

Features:

Rigid base for tower truss installations
 Flexible mobility (removable wheels)
 Enhanced leveling via 8 adjustable height points
 Wide tube base design ensures balance and load spread
 Modular and compatible with ST-40 truss series

Hybrid Base Plate – ST-40



Model Codes: BS-ST-40-Hybrid

Description: The BS-ST-40-Hybrid is a multi-functional hybrid base plate designed for the ST-40 truss series. With a robust steel frame, integrated mobility, and triple-point ground adjustment, this unit delivers superior flexibility for both indoor and outdoor stage environments. Its extended frame structure allows it to be positioned at corners or center points in concert stages or exhibition booths, while adjustable components ensure stable performance across uneven surfaces.

Key Specifications:

Frame Size: 3120mm × 355mm
Compatible Truss: 405mm × 405mm (ST-40 Series)
Material: High-grade Mild Steel
Main Tubes: 122 × 61 × 4.5 mm
Outer Tubes: 96 × 48 × 3.0 mm
Support Plate Thickness: 8 mm
Connectors: 50mm Half Male (x4) – Bolt-on and Welded
Finish: Chamfered edges (0.5 × 45°), burr-free
Tolerance Standard: ISO:2768
Compliance: FPA-ready and Q/C approved
Mobility & Adjustment:
Heavy-duty Caster Wheels: 4 units (Bolt or Weld attachment)
Height Adjustors: DR-M28 threaded base adjustors (x8)
Outriggers:
 Stabilizer Tubes – DR-OT-40-H (x4)
 Locking Pins – DR-OT-PIN-40-H (x4)

Features:

Compatible for both straight and corner truss support
 Designed for indoor shows, outdoor concerts, and exhibitions
 Three-point adjustable leveling system ensures precise alignment
 Supports both mobile and fixed configurations
 Engineered for heavy loads with enhanced footprint stability
 Fast assembly and easy transport

Top Plate – ST-40-LD



Model Codes: TP-ST-40-LD

Description: The Top Plate for the ST-40-LD truss system is a light-duty lifting interface, precisely engineered to handle high-load structural requirements. Designed with a 405mm × 405mm footprint and integrated 2-ton pulley support, this component ensures seamless load transfer from hoisting systems into truss towers. Built from reinforced mild steel and high-tensile alloy components, it ensures long-lasting durability in demanding rigging environments.

Key Specifications:

Outer Dimensions: 405mm × 405mm
Top Tube: RHS 96×48×3.0mm – Length: 910mm (x2)
Bottom Tube: RHS 96×48×3.0mm – Length: 385mm (x2)
Material: Mild Steel (Frame) + Alloy Steel (Connectors & Pulleys)
Bolt Bush: Ø25 × 2.0mm – Length: 90mm (x4)
Connectors: 50mm Half Male – 42CrMo4 (x4)
Pulley: 2-Ton Capacity with SKF Bearings (x2)
Pulley Rod: Ø22mm × 200mm – 42CrMo4 (x2)
Fasteners: M14 × 105mm HT Hex Bolts – IS 3640 standard (x4)

Features:

High-load bearing capacity suitable for truss hoist applications
 Integrated pulley system with SKF bearings for smooth operation
 Durable high-strength steel structure with precision chamfering
 Modular bolt-on half-male connector design
 ISO:2768 manufacturing tolerance and FPA-compliant production

Applications:

Top connection for ST-40-HD vertical truss towers
 Manual or motorized hoist integration
 Structural transition point in load-bearing truss systems
 Event and industrial rigging for lighting, sound, or displays

Top Plate – ST-40-HD



Model Codes: TP-ST-40-HD

Description: The Top Plate for ST-40-HD is a structurally reinforced steel assembly designed to support lifting and hoisting mechanisms atop heavy-duty truss towers. It integrates dual C-channels, welded box tubing, and precision-aligned pulley systems to deliver reliable support for both manual and motorized hoist applications. Engineered for 2-ton load handling, the unit is fabricated from mild steel and high-grade alloy components to meet rigorous industry performance standards.

Key Specifications:

Top Channels: C-Channel 100×50×5.0mm – Length: 910mm (x2)
Bottom Tubes:
 SHS 60×60×4.0mm – Length: 425mm (x2)
 SHS 50×50×3.0mm – Length: 295mm (x2)
Support Tube: Ø25×2.0mm – Length: 75mm
Pulley Rods: Ø22mm × 105mm – Material: 42CrMo4 (x2)
Pulleys: 2-Ton Load Capacity – Material: 42CrMo4 (x2)
Bearings: SKF 62_22_2_01 (x8)
Connectors: 50mm Half Male – Length: 53mm – Material: 42CrMo4 (x4)
Fasteners: M14×80mm HT Bolts (IS 3640 Standard) – Alloy Steel (x4)
Material Composition: Mild Steel + Alloy Steel
Surface Finish: Chamfered (0.5×45°), Deburred
Tolerances: As per ISO:2768

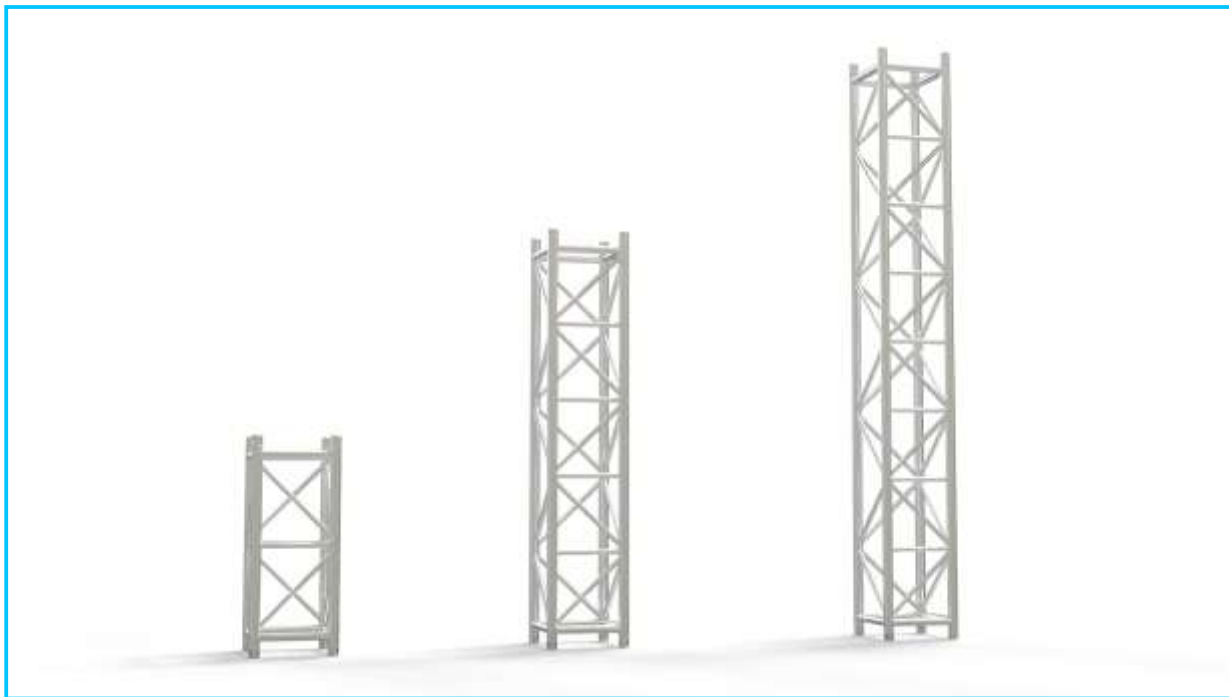
Features:

Designed for ST-40-HD truss towers (405mm series)
 Dual-pulley setup for hoist and chain block lifting
 High-strength construction for load-intensive setups
 Fully welded frame with cross-structural stability
 Compatible with standard spigot truss systems
 Q/C approved and FPA-compliant

Applications:

Top lifting interface for truss towers
 Event rigging and roof hoist support
 AV and lighting structures
 Load transition point for motorized winch systems

Aluminium Truss – ST-40 LD Series



Available Sizes: 0.5m, 1m, 2m, 3m, (Customization Also Available)

Model Codes: ST-40-LD-100 / ST-40-LD-200 / ST-40-LD-300

Description: The ST-40 LD Series is a lightweight-duty aluminium truss system designed for compact setups requiring strength, precision, and ease of installation. Constructed from high-grade EN-AW-6082-T6 aluminium alloy, this truss is optimized for exhibitions, small stage constructions, and retail/event rigging applications. Its 405mm square profile ensures reliable load distribution with minimal structural weight.

Key Specifications:

Outer Dimensions: 405mm × 405mm

Main Chord: Ø50 × 3.0mm

Vice Chord: Ø50 × 2.5mm

Sub Chord: Ø25 × 3.0mm

Brace Elements: Ø25 × 3.0mm

Material: EN-AW-6082-T6 Aluminium

Connection Type: Ø50 × 43.8mm Spigot

Finish: Chamfered and deburred edges

Tolerances: ISO:2768 compliant (Linear & Angular)

Net Weight (Approx.): 11Kg per Meter

Applications:

Compact indoor and outdoor stages

Trade show booths and temporary displays

Retail signage and suspended lighting

Background structures for photography/video sets

Features:

Ideal for lightweight load-bearing applications

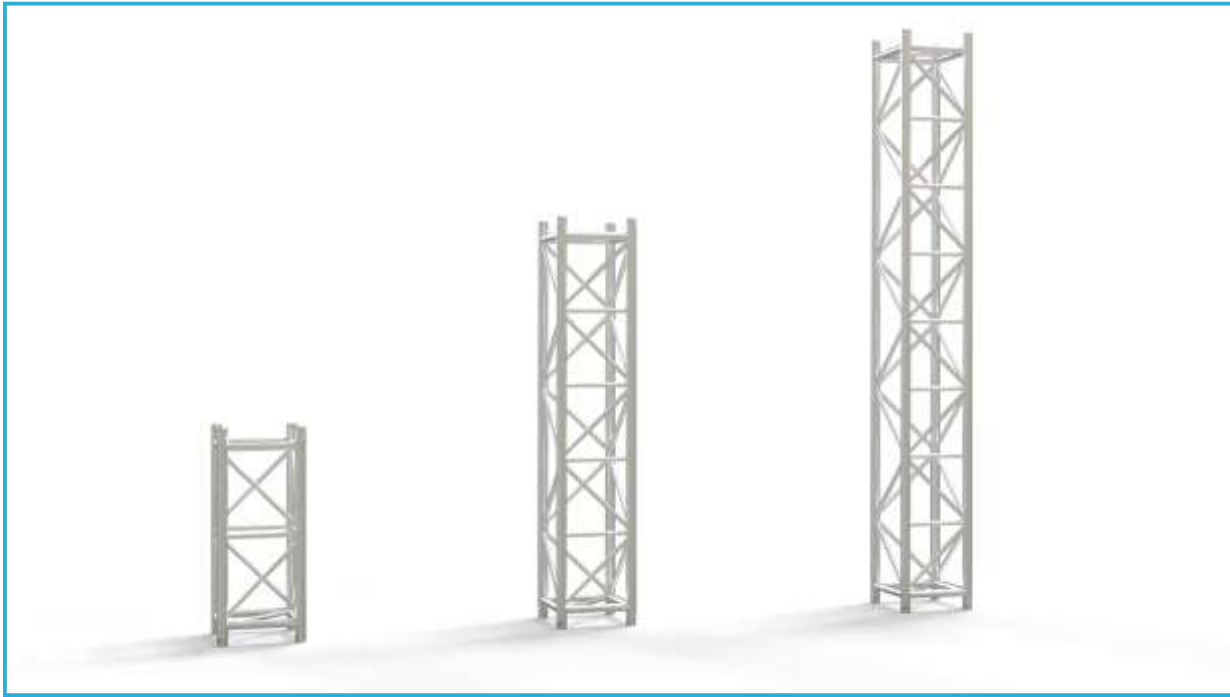
Designed for fast, secure connection using spigot system

Welded with precision and compliance with Q/C and FPA requirements

Clean, professional appearance with smooth finishing

Standardized across all three lengths for modular compatibility

Aluminium Truss – ST-40 HD/XHD Series



Available Sizes: 0.5m, 1m, 2m, 3m, (Customization Also Available)

Model Codes: ST-40-HD-XHD-100 / ST-40-HD-XHD-200 / ST-40-HD-XHD-300

Description: The ST-40 HD/XHD Series is a heavy-duty aluminium truss system engineered to handle high-load, high-reliability structural demands in large event installations. Built with reinforced Ø50×4.0mm main chords and internal bracing, this system ensures maximum strength while remaining lightweight and modular. Ideal for long-span roof trusses, LED wall supports, or load-intensive vertical towers.

Key Specifications:

Outer Dimensions: 405mm × 405mm

Main Chord: Ø50 × 4.0mm

Vice Chord: Ø50 × 2.5mm

Sub Chord: Ø25 × 3.0mm

Braces: Ø25 × 3.0mm

Internal Braces: Ø25 × 3.0mm – added for enhanced stability

Connection System: Ø50 × 41.8mm Spigot

Material: EN-AW-6082-T6 Aluminium Alloy

Finish: Deburred and chamfered

Manufacturing Tolerance: ISO 2768 compliant (linear & angular)

Net Weight (Approx.): 11Kg per Meter

Applications:

Concert stage roofs and towers

High-load truss systems for lighting, sound, or video walls

Temporary structures for industrial and commercial events

Rigging frames and truss grids in film and broadcast

Features:

Heavy-duty construction suitable for high-performance applications

Reinforced main chord (4mm thickness) for increased load capacity

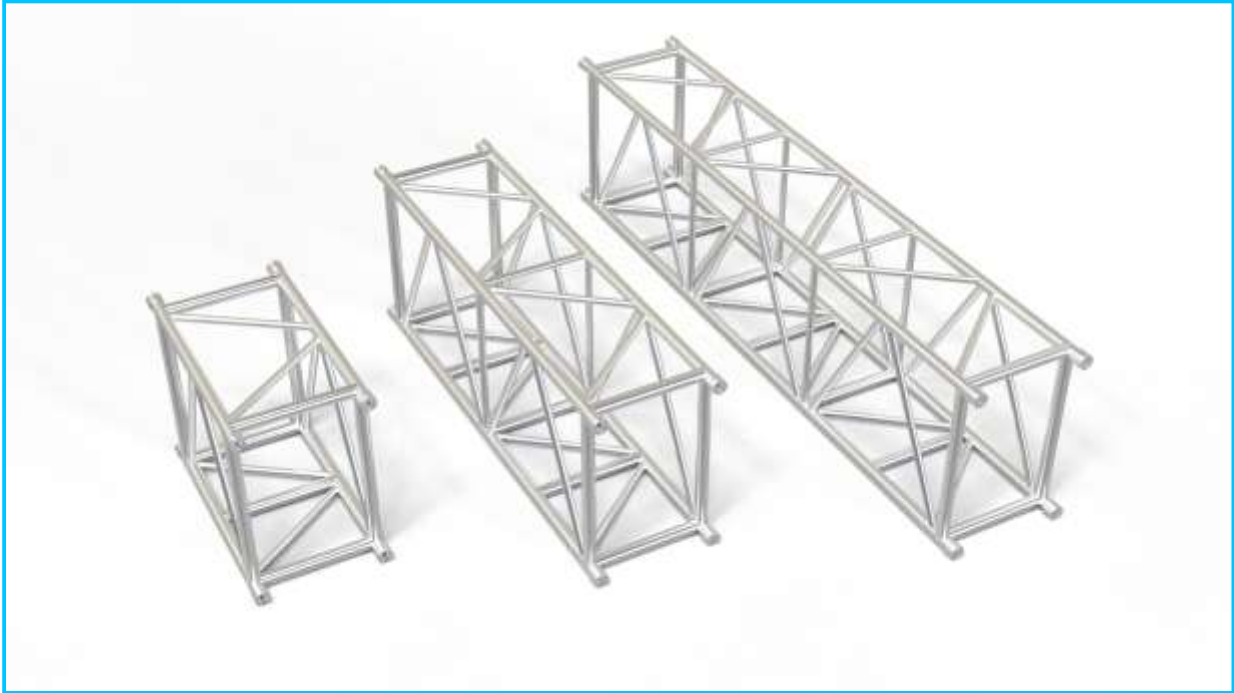
Integrated internal bracing for rigidity in long-span installations

Precision-machined for fast, secure connection

Ideal for outdoor structures and elevated installations

Fully Q/C approved and FPA compliant

ST-77-LD (Truss Beam – Light Duty)



Available Sizes: 0.5m, 1m, 2m, 3m, (Customization Also Available)

Model Codes: ST-77-LD-100, ST-77-LD-200, ST-77-LD-300

Description: The ST-77-LD is a lightweight but structurally sound truss beam designed for medium-sized event setups. Built with high-strength aluminum alloy and a wider frame geometry, it offers stability and easy handling. The 77-series format provides additional reach and rigidity while keeping the weight manageable.

Key Specifications:

Main Tube: Ø50×4.0 mm

Side Vice: Ø50×2.5 mm

Top/Down Tube: Ø50×2.5 mm

Outer Dimensions: 775mm x 535mm

Bracing System:

Side Brace: Ø30×3.0 mm

Top-Down Brace: Ø30×3.0 mm

Sub Tubes (Side): Ø30×3.0 mm

Sub Tubes (Top): Ø30×3.0 mm

Connector: 60 mm Conical

Material: EN-AW-6082-T6 Aluminum

Weight (Approx.): 17.2 Kg per Meter

Key Features:

Wider 77 series geometry for greater span support

Precision-cut conical ends for safe and tight joints

Excellent for lighting rigs, exhibition frames, and temporary installations

Compliant with ISO:2768 manufacturing tolerances

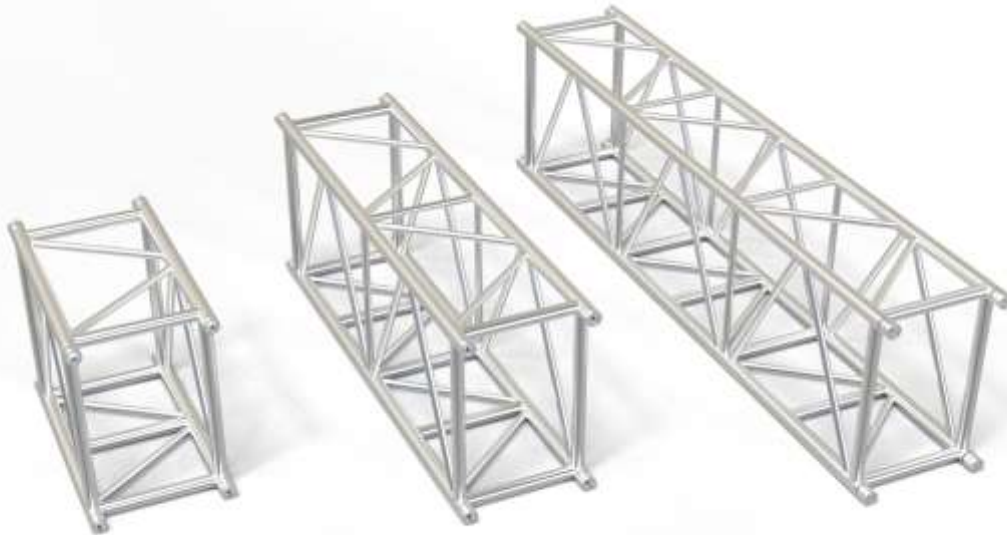
Applications:

Event setups and stage backdrops

Trade fair booths and overhead signage

Interior truss designs in malls and public venues

Aluminium Truss Beam – ST-77-HD



Available Sizes: 0.5m, 1m, 2m, 3m, (Customization Also Available)

Model Codes: ST-77-HD-100, ST-77-HD-200, ST-77-HD-300

Description: The ST-77-HD is a high-load capacity truss beam designed for demanding structural applications in professional staging and rigging systems. With Ø60mm main chords and a wide-body configuration, this 1-meter truss provides exceptional stability, torsional strength, and compatibility with 60mm spigot connection systems. Built from EN-AW-6082-T6 aluminium alloy and assembled with precision-angled bracing, it is engineered to meet the needs of heavy-duty rigging and modular stage designs.

Key Specifications:

Main Tubes: Ø60 × 4.0 mm

Side Vice Chords: Ø50 × 2.5 mm

Top Vice Chords: Ø50 × 2.5 mm

Down Tubes: Ø50 × 2.5 mm

Outer Dimensions: 775mm x 535mm

Side Braces: Ø30 × 3.0 mm

Top-Down Braces: Ø30 × 3.0 mm

Connection: 60mm Conical Connectors

Material: EN-AW-6082-T6 Aluminium

Angles: Bracing at approx. 54.4° & 63.6°

Manufacturing Standard: ISO:2768 tolerance with 0.5×45° chamfered edges

Applications:

Load-bearing truss beams for stage roofs

LED screen support and flying grid systems

Outdoor structures and long-span truss configurations

Touring and fixed stage installations

Features:

High rigidity with Ø60mm primary chords

Wide base and triangulated brace structure for maximum strength

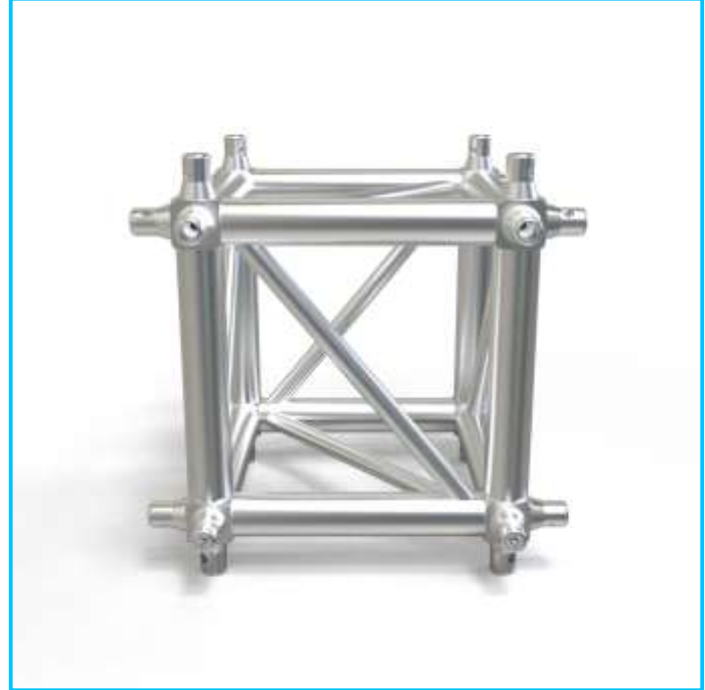
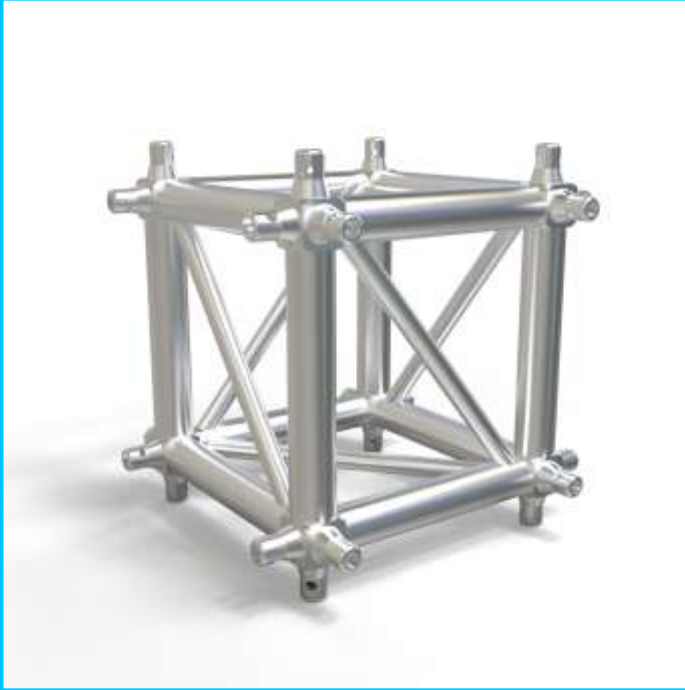
Designed for large-span or vertical tower integration

TIG-welded for precision and strength

FPA (First Part Approval) compliant and Q/C certified

Lightweight yet extremely robust

Aluminium Corner Block – Series



Available Model : CB-305, CB-385, CB-405, (Customization Also Available)

Description: The Aluminium Corner Block – 385 Series is a high-strength modular truss junction designed for 50mm tube systems, offering exceptional stability and load-handling performance in multi-directional configurations. With a cube form factor and 50×50×50mm corner blocks, this unit ensures secure and seamless connectivity across truss lines. Its enhanced main and brace profiles are engineered for medium- to heavy-duty event, exhibition, and installation requirements.

Key Specifications:

Corner Block Size: 385mm x 385mm
Main Chords: Ø50×3.0mm
Braces: Ø25×3.0mm
Corner Nodes: 50×50×50mm
Connectors: Ø50×45.0mm Half Male Hollow
Material: Aerospace-grade Aluminium Alloy
Finish: Brushed or polished finish with deburred edges
Connection Type: Spigot-compatible with hollow pin system
Weld Type: TIG-welded joints for maximum strength

Features:

Designed for 50mm modular truss systems
 Heavy-duty aluminium construction with sleek finish
 Precision welding and fitment for seamless connectivity
 Corner block design improves structural efficiency
 Lightweight yet engineered for durability in load-bearing setups

Applications:

Large-format truss systems and stage corners
 Exhibition and event framework junctions
 Suspended grid support or overhead truss transitions
 Fixed architectural lighting or display mounting structures

ROUND TRUSS



Available Sizes: 2m, 4m, 6m, 8m, 10m, (Customization Also Available)

Model Codes: RT-30

Description: The Round Aluminium Truss is a modular, precision-engineered circular truss system designed for high-visibility installations such as lighting rigs, signage rings, and exhibition displays. Crafted from EN-AW-6082-T6 aluminium alloy, it combines strength, lightweight design, and aesthetic symmetry. With finely calculated bracing angles and seamless conical connections, it ensures high structural integrity while maintaining a clean visual profile.

Key Specifications:

Main Tube: Ø50×2.5 mm

Side & Top Vice Tubes: Ø50×2.5 mm

Bracing: Side and Top-Down Brace Ø25×3.0 mm

Connections: Secure 50mm Conical Connectors

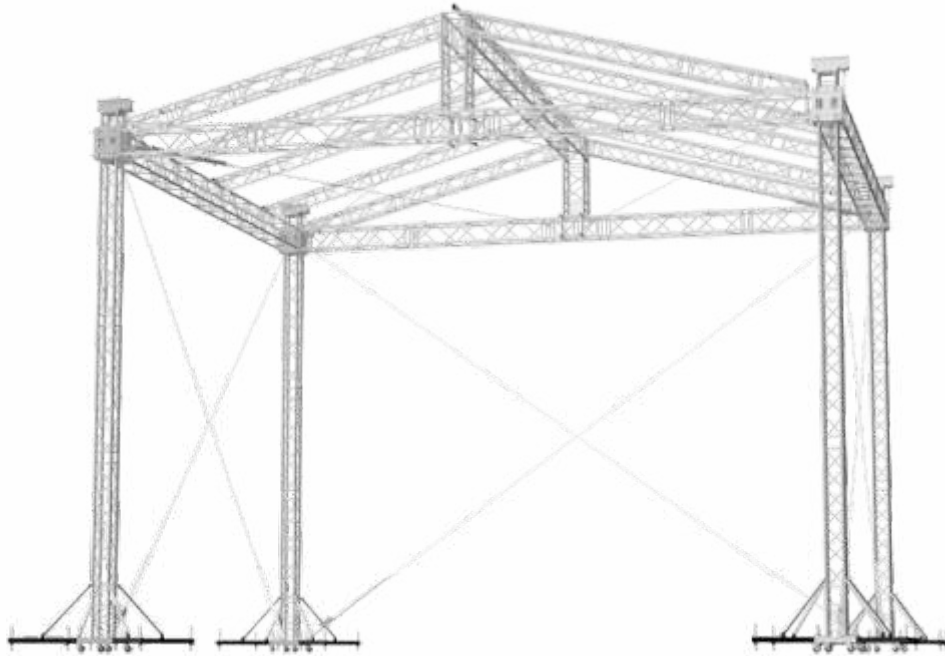
Material: EN-AW-6082-T6 (High-Strength Aluminum Alloy)

Precision Machined Angles: 49.6° to 59.5° (typical)

Features:

- Fully modular – sections can be connected to create full or semi-circles
- High strength-to-weight ratio for suspended loads
- Seamless circular shape ensures even load distribution
- Visual symmetry ideal for center-stage and overhead installations
- Compatible with standard 50mm truss systems
- Easy to transport and assemble

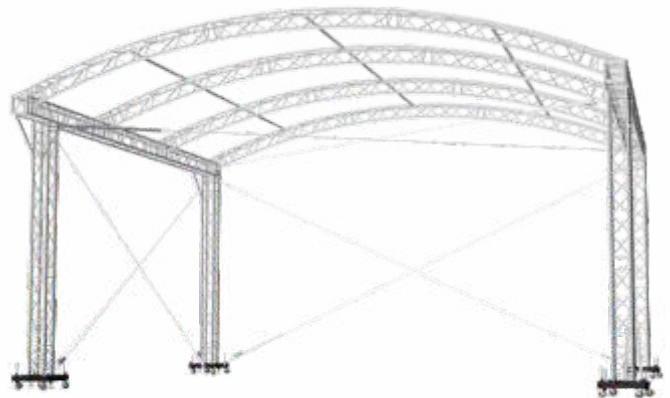
PITCH ROOF TRUSS



SADDLE ROOF TRUSS



ARCH ROOF TRUSS



HINGE SETS-01-02



CONNECTIONS-01-02



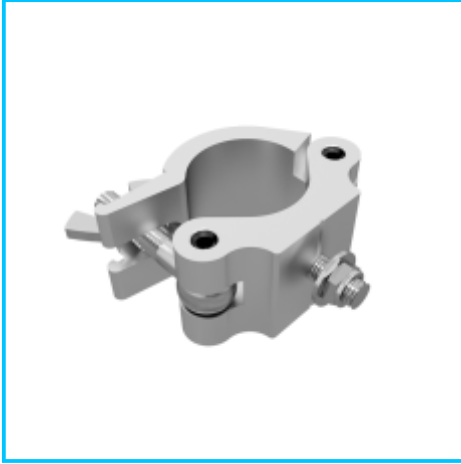
Aluminium Spigot-01-02



Spigot PIN-01-02



Standard Clamp-50



Standard Clamp-60



Double Clamp-50



Double Clamp-60



T-Truss Clamp



Pipe Clamp





**MANUFACTURER & SUPPLIER OF PREMIUM ALUMINIUM
TRUSSES & STRUCTURAL SYSTEMS**

CONTACT US

FACTORY LOCATION: SHIV NAGAR, KUTANA, PLOT NO 18, ROHTAK 124001

WEBSITE: WWW.ALUMINIUMTRUSSFACTORY.COM

CALL US: TAPISH 9138976004, DEEPAK 9138976003

E-MAIL: INFO@ALUMINIUMTRUSSFACTORY.COM